



*Industries, Inc.*

# Drive Shaft Center Supports



**Westar Center Support Bearing Frames** are constructed with extra deep draw quality cold-rolled steel. Our frames are much thicker than our major competitors. The frames are black powder coated to provide protection against rust and corrosion.

**Westar Heavy Duty Center Supports** have additional tabs to provide better support for the rubber cushion and bearing.

**Westar Support Bearings** are assembled with precision bearings which meet or exceed stringent OEM specifications for heavy and light duty markets.

**All Westar Support Bearings** contain zinc-plated bottom plates to hold the rubber cushion in the frame and provide additional support.

**1-800-WESTAR-4**

**[www.westarindustries.com](http://www.westarindustries.com)**



# Drive Shaft Center Supports

TYPE 1



TYPE 2



TYPE 3



TYPE 4



TYPE 5



TYPE 6

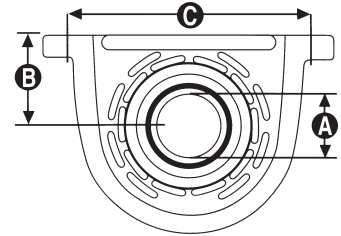


TYPE 7



## Quick Reference Dimension Guide

WESTAR #	A	B	C
DS-6035	1 3/16"	3 1/2"	N/A
DS-66056	1 3/8"	2 1/4"	6 5/8"
DS-66038	1 9/16"	2 1/2"	6 5/8"
DS-66053	1 9/16"	2 1/4"	6 5/8"
DS-66040	1 49/64"	2 1/4"	7 5/8"
DS-66048	1 31/32"	2 3/4"	7 5/8"
DS-66601	2 23/64"	3 3/8"	8 5/8"
DS-66601S	2 3/4"	3 3/8"	8 5/8"



## DRIVE SHAFT CENTER SUPPORTS WITHOUT FLINGERS

WESTAR #	OLD #	TYPE	SPICER #	FEDERAL MOGUL #	ZELLER #	NEAPCO OLD #
DS-6027		1			DS-201R	
DS-6028		2	210580X		DS-101	
DS-6035	DS-6035	2	210527X	HB206-FF	DS-101K	81-1020
DS-6050		3	211302X	HB-1	DS-203KC	
DS-6051		3	211303X	HB-2	DS-303KC	
DS-6052		3	211304X	HB-3	DS-403KC	
DS-6054		7		HB-5	DS-205KG	81-2050
DS-6056		4	211139X	HB-88107A	DS-207KF	
DS-6061		4	211590-1X			
DS-6062		4	211431X			

## DRIVE SHAFT CENTER SUPPORTS WITH FLINGERS

WESTAR #	OLD #	TYPE	SPICER #	FEDERAL MOGUL #	ZELLER #	NEAPCO OLD #
DS-66601	DS-601	6	210661-1X	HB88512-AHD	DS-601KF	81-6010
DS-66601S	DS-601S	6	210875-1X	HB88512-AS	DS-601KFS	81-6011
DS-66601SB	DS-601SB	6	210748-1X 211070-1X		DS-701KF DS-701KFS	81-7011
DS-66038	DS-6038	5	210139-1X 210391-1X	HB88508 HB88508-E	DS-301KF	
DS-66038A	DS-6038A	5	210140-1X	HB88508-C	DS-301KG-1	81-3021
DS-66038B	DS-6038B	5	210144-1X	HB88508-D	DS-301KG-2	81-3022
DS-66039	DS-6039	5	210433-1X	HB88508-B	DS-301KG	81-3012
DS-66040	DS-6040	5	210209-1X	HB88509	DS-401KF-1	81-4021
DS-66040A	DS-6040A	5	210084-2X	HB88509-A	DS-401KF-1	81-4011
DS-66040B	DS-6040B	5	210130-1X	HB88509	DS-401KG	81-4020
DS-66041	DS-6041	5	210207-1X	HB88509-C	DS-401KG	81-4012
DS-66048	DS-6048	5	210121-1X	HB88510	DS-501KF	81-5010
DS-66048S	DS-6048S	5	210881-1X	HB88510-S	DS-501KFS	81-5011
DS-66049	DS-6049	6	210661-1X	HB88512-A	DS-601KF	81-6010
DS-66053	DS-6053	4	210866-1X	HB88508-AB	DS-204KF-1	81-2041
DS-66053A	DS-6053A	4	210873-1X	HB88508-AA	DS-204KF-2	81-2042
DS-66056C	DS-6056C	4	210088-1X	HB88107-B	DS-201KF-1	81-2012
DS-66056D	DS-6056D	4	210090-1X	HB88107-C	DS-201KF-2	81-2013
DS-66056E	DS-6056E	4	210370-1X	HB88107-E	DS-201KG-2	81-2122
DS-66056F	DS-6056F	4	210367-1X	HB88107-D	DS-201KG-1	81-2121

**1-800-WESTAR-4**

1-800-937-8274

**www.westarindustries.com**

8241C Sandy Court, Jessup, MD 20794